



**FOOTHILL COLLEGE**

# Revisiting College Goals and Metrics

Elaine Kuo

Institutional Research & Planning

PaRC Meeting

April 25, 2012

# Overview

- Education Strategic & Master Plan (ESMP)
- District and college goals and metrics
- Accountability Reporting for the Community Colleges (ARCC Report)



# Goals, Metrics, Targets

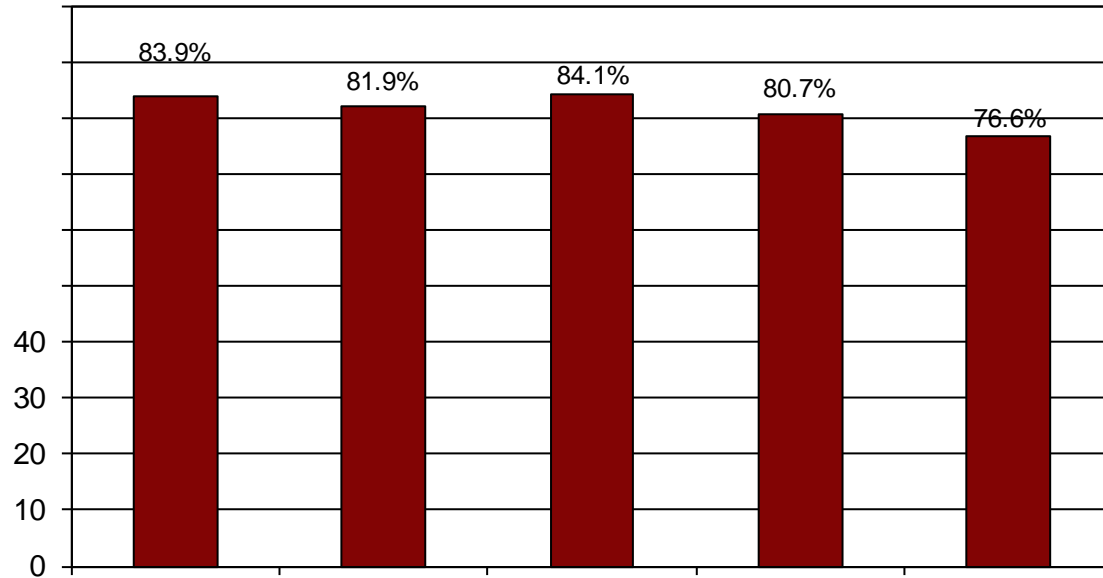


# Basic Skills

Goal	Metric	Target
Improve student achievement outcomes for basic skills courses	ARCC Basic Skills Course Completion Rates (Success rates of students in a basic skills course)	By 2015, Foothill will achieve 85.0% or the highest score within the peer group.

s075 0 T9





Target status: Foothill represents peer group high.

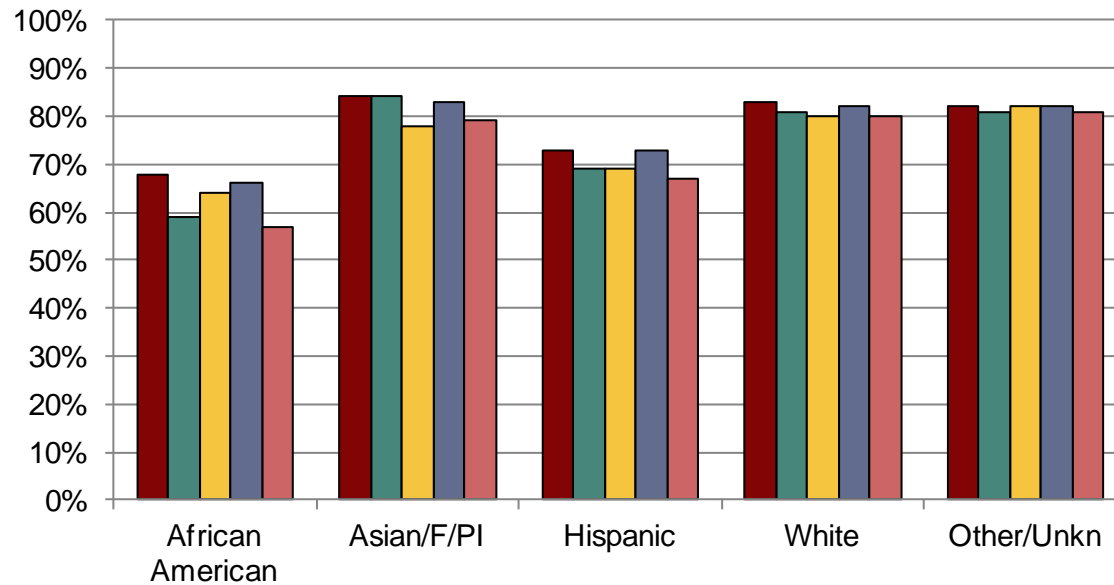


FOOTHILL COLLEGE



# Course Success by Ethnicity

Foothill College



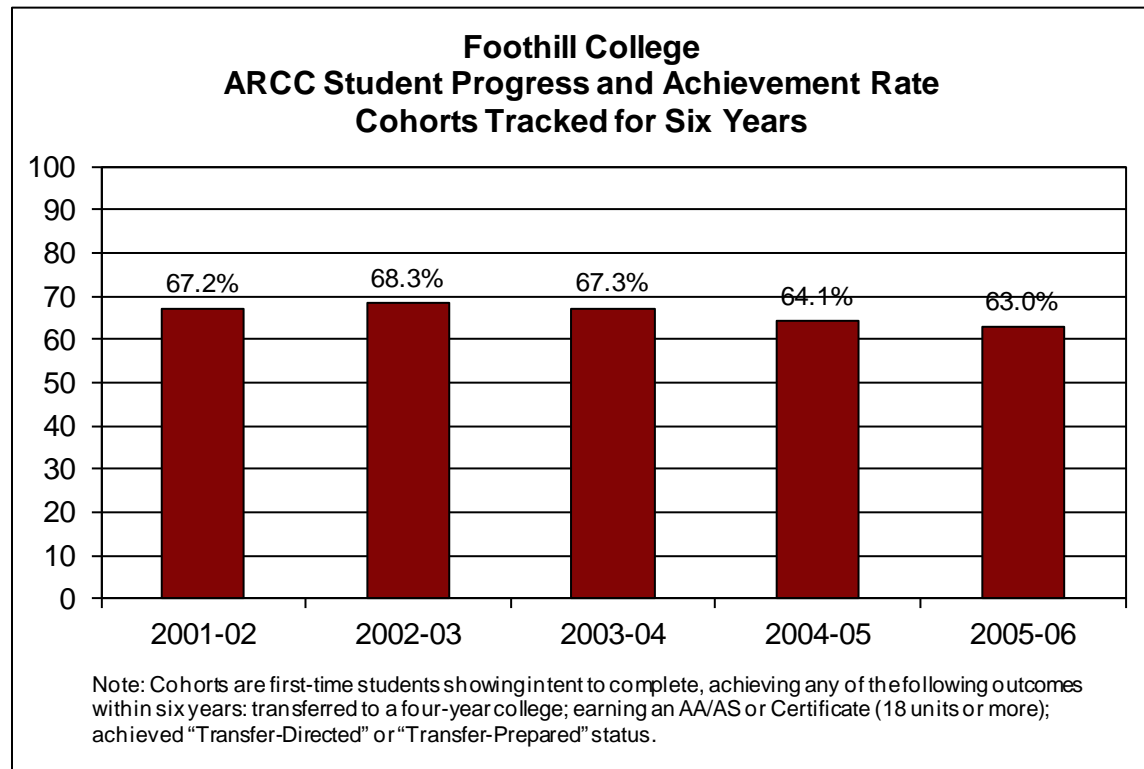
FOOTHILL COLLEGE

# Transfer

Goal	Metric	Target
Improve Student Outcomes and Close the Achievement Gap	ARCC Student Progress and Achievement Rate (transfer to four year, transfer directed, transfer prepared)	By 2015, Foothill will increase the number of students who transfer; our goal is to transfer 308 to the UC system, 245 to the CSU system, and 490 to in-state privates (ISP) and out of state (OoS) institutions.
	CCCCO Transfer Velocity Cohort Report	By 2015, Foothill will increase the transfer rate for historically underserved student groups by 8 percentage points or be higher than the state average.
Improve Student Success	ARCC Persistence Rate	By 2015, Foothill will achieve 80.0% or the highest score within its peer group.
	ARCC Persistence Rate (by ethnicity)	By 2015, Foothill will increase the fall to fall persistence rate among historically underserved student groups by 5 percentage points.



# Student Progress & Achievement Rate



Source: ARCC Report 2012

Peer group includes Alameda, American River, Berkeley City College, Cabrillo, Canyons, Glendale, Irvine Valley, Laney, Marin, Merritt, Mira Costa, Monterey Ohlone, Palomar, Saddleback, San Diego City, San Diego Miramar, San Francisco City, San Mateo, Santa Rosa, West LA, West Valley.

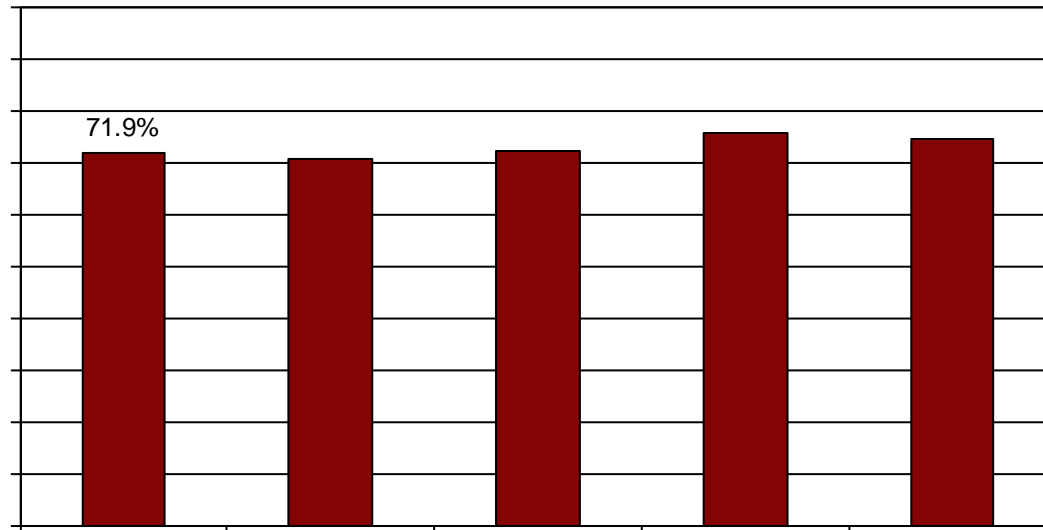
Target status: Foothill remained steady for last two cohorts.



FOOTHILL COLLEGE



# Fall to Fall Persistence

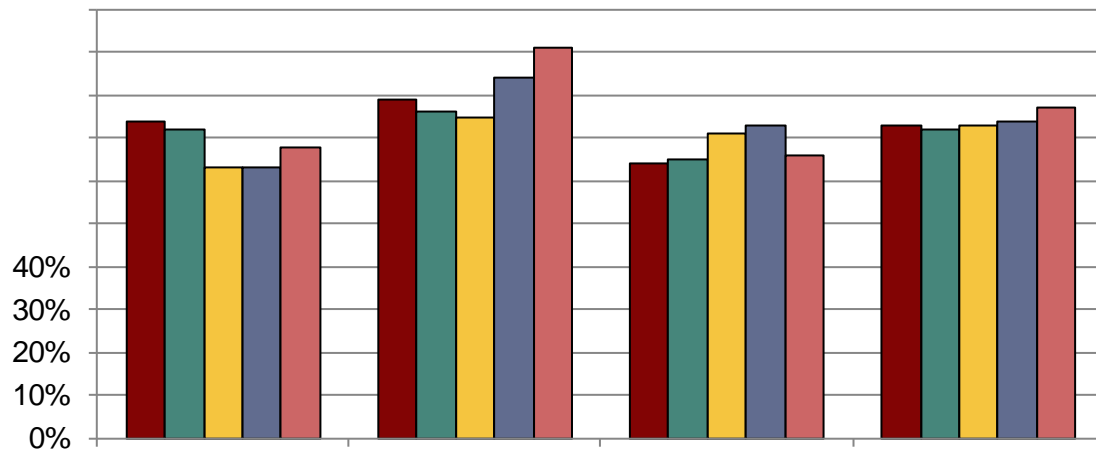


Target status: Foothill is at peer group average.



FOOTHILL COLLEGE

# Fall to Fall Persistence by Ethnicity



Target status: Foothill persistence rate on increasing trend for most ethnic groups.

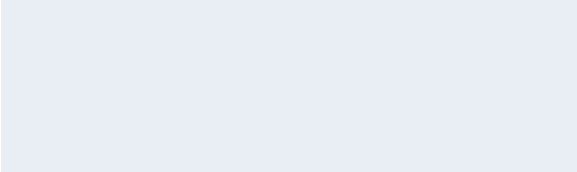


FOOTHILL COLLEGE

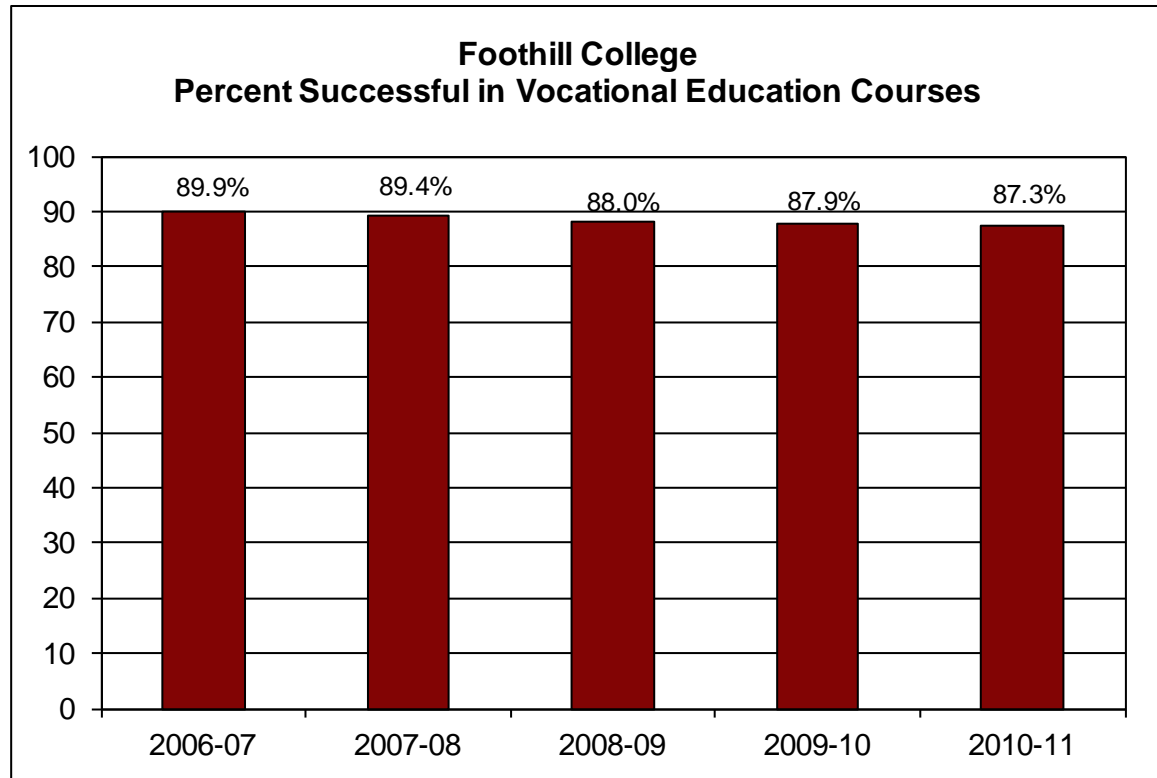
# Workforce



FOOTHILL COLLEGE



# Vocational Course Completion



Source: ARCC Report 2012

Peer group includes Alameda, American River, Cabrillo, Cerritos, Chabot, Cosumnes River, East LA, Hartnell, LA Trade Tech, Las Positas, Long Beach City, Mira Costa, Mt. San Antonio, Ohlone, Palomar, San Bernardino, San Diego Miramar, San Francisco City, San Jose City, San Mateo, Sierra, Skyline

Target status: Foothill represents peer high.



FOOTHILL COLLEGE

# Certificates and Degrees Awarded

---

---

---

---

---

---

---

---

---

---

Target status: Foothill has increased number of certificates and degrees by more than 8 percentage pts.





FOOTHILL COLLEGE





# For More Information

- ARCC Report:
  - <http://www.cccco.edu/Portals/4/TRIS/research/ARCC/ARCC%202012%20March%20Final.pdf>
- FHDA Research:
  - <http://research.fhda.edu>
- Foothill IR:
  - <http://www.foothill.edu/staff/irs/FHresearch/requestcompleted.php>

