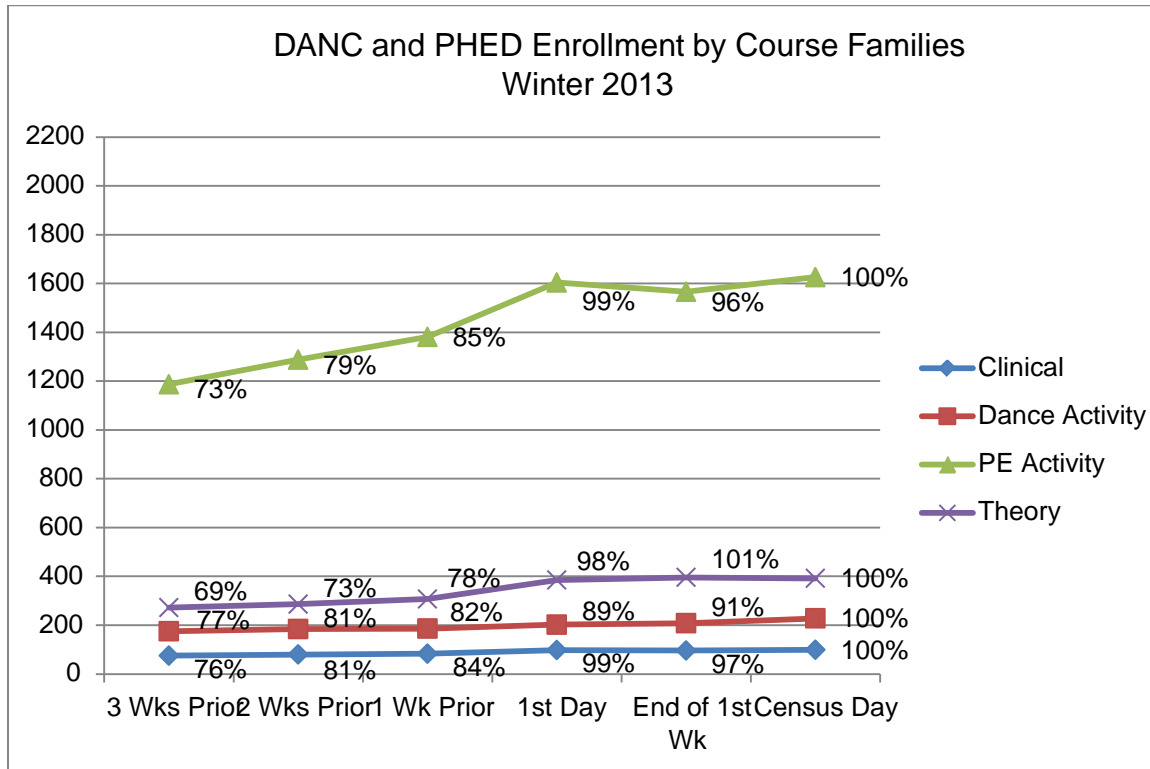


Charts 13: Course enrollment as percentage of total enrollment (taken on census day)

Chart 2.





Charts 46: Course enrollment as an average based on the number of sections offered within each course family (highlighting enrollment at 20 and 30) [excludes athletics courses and PHED 45)

Chart 4.

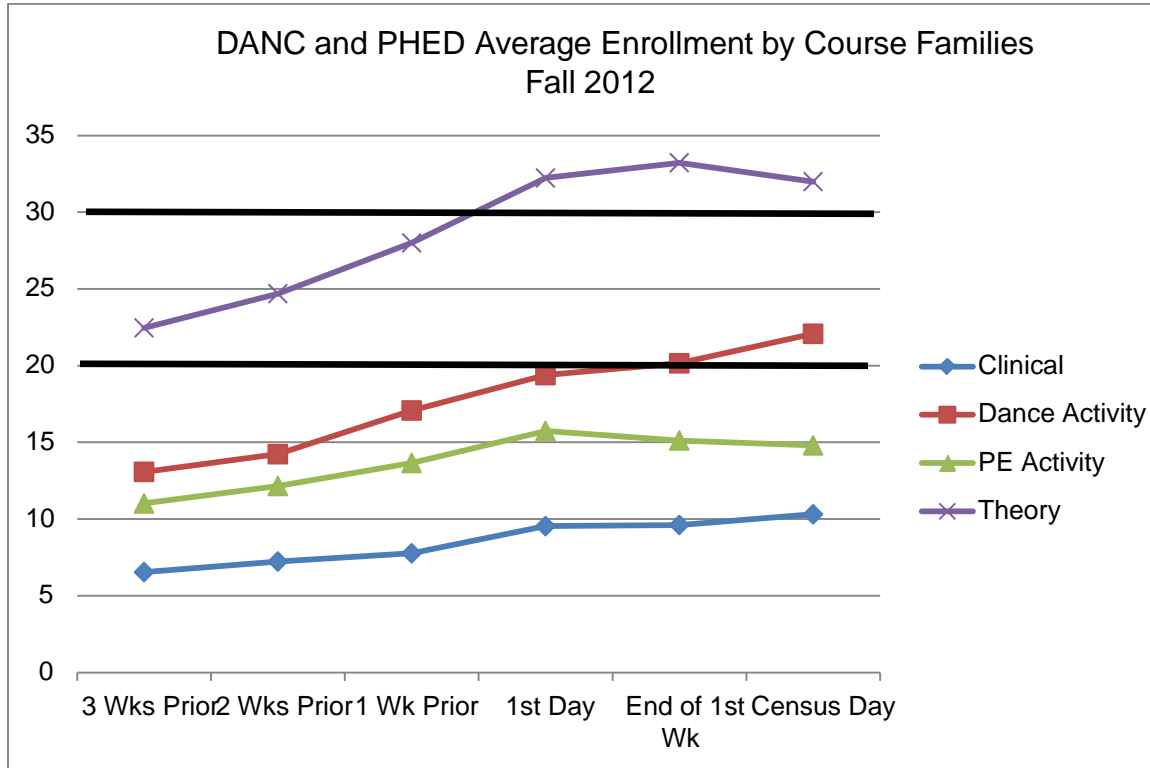
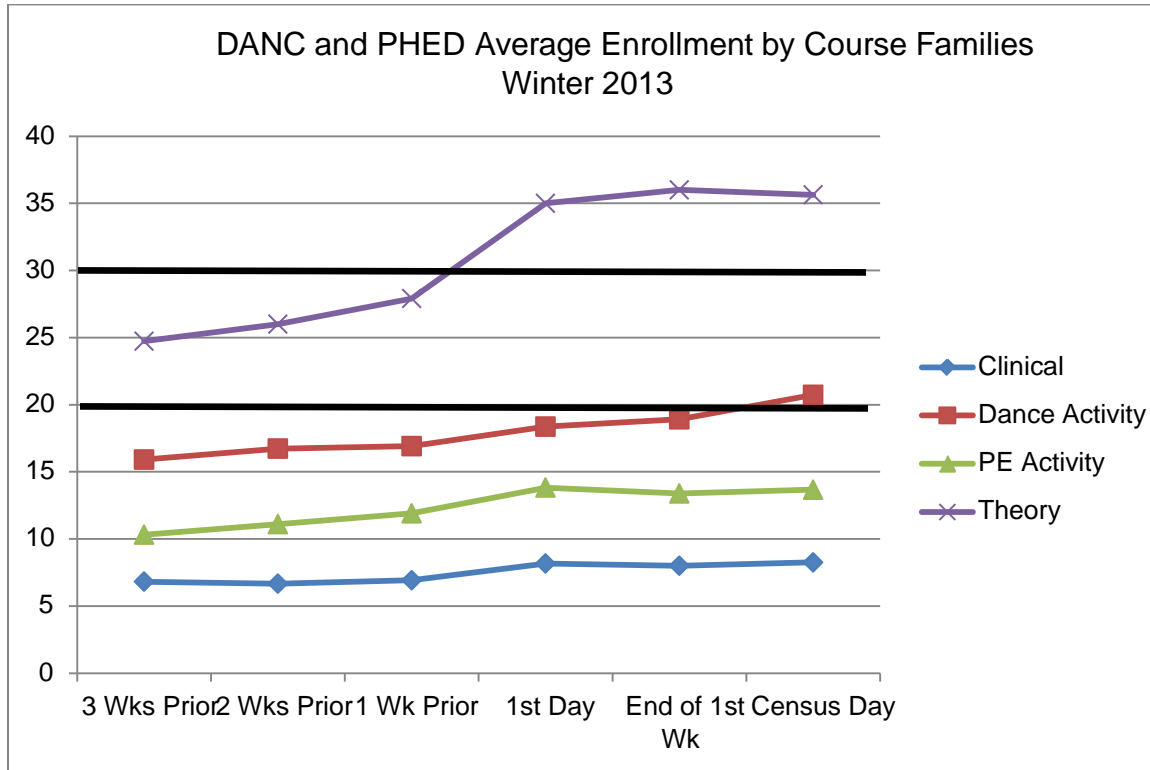


Chart 5.





Charts 7-9: Enrollment excluding PE ntr

Chart 8.

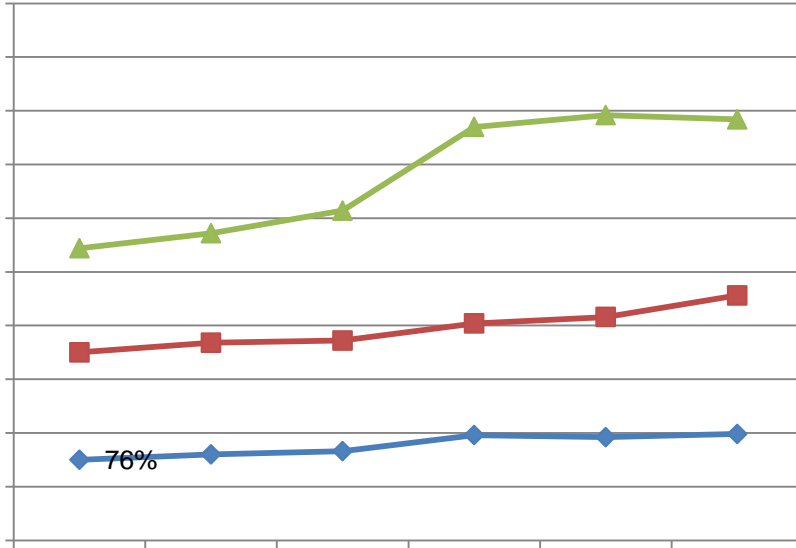




Chart 9.

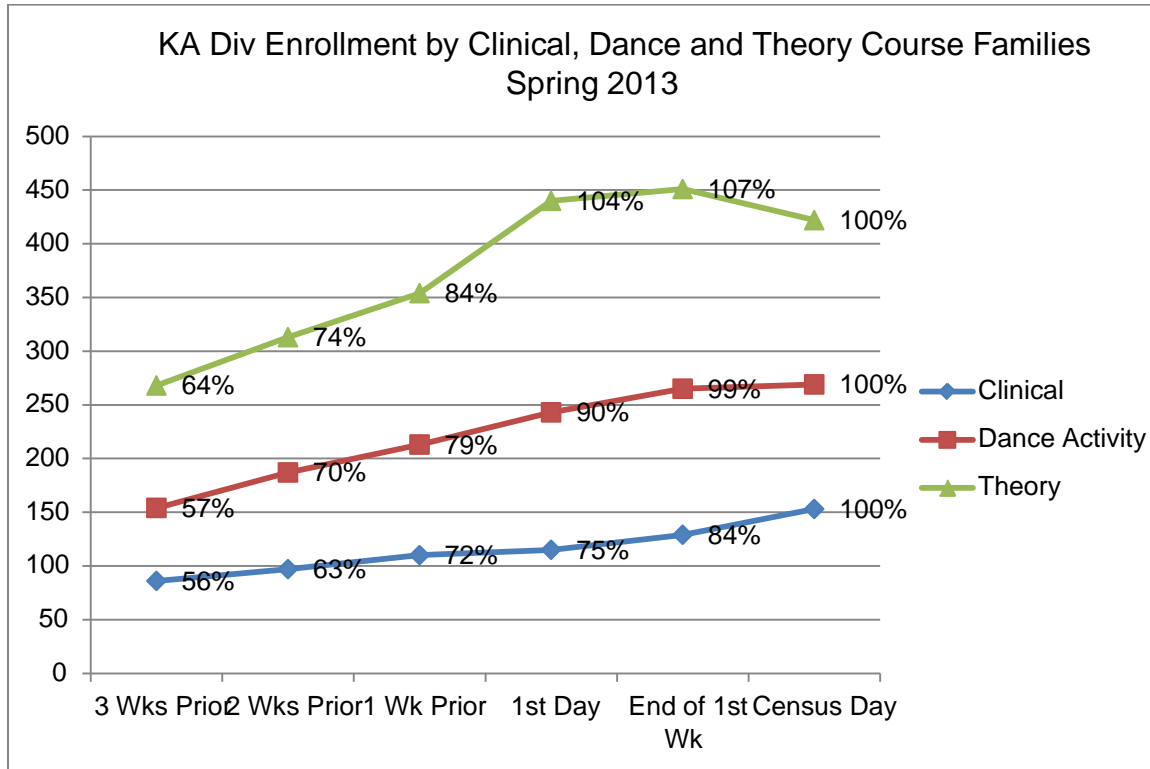


Chart 10: PE activity enrollment as percentage of total enrollment (taken on census days) excludes athletics courses and PHED 45)

Chart 10.

