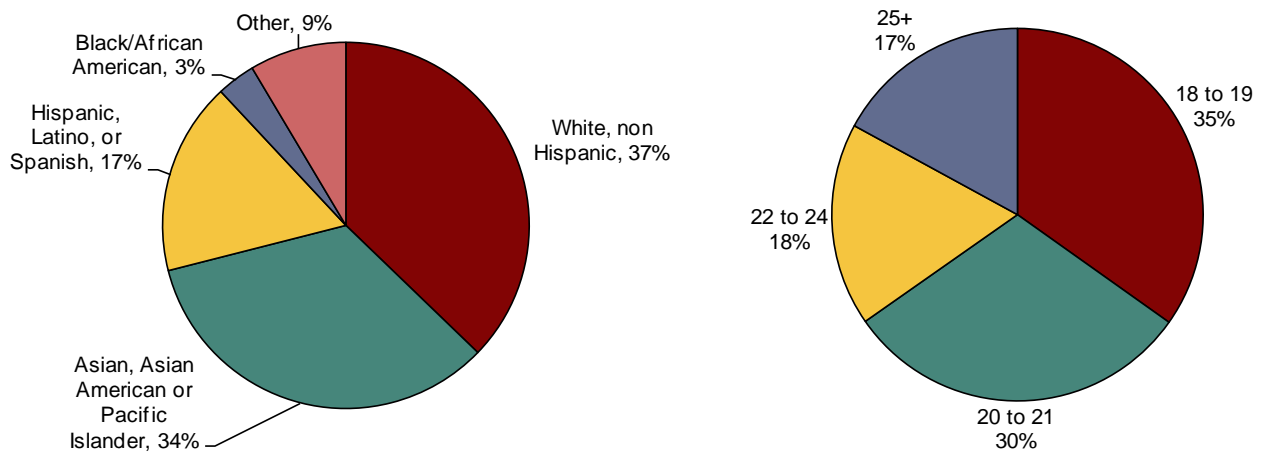
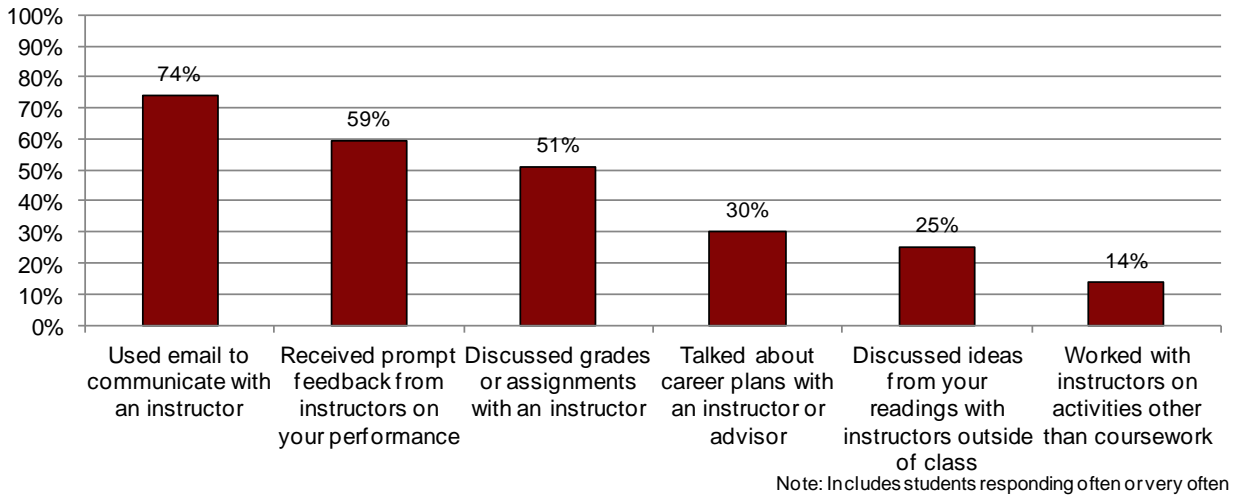


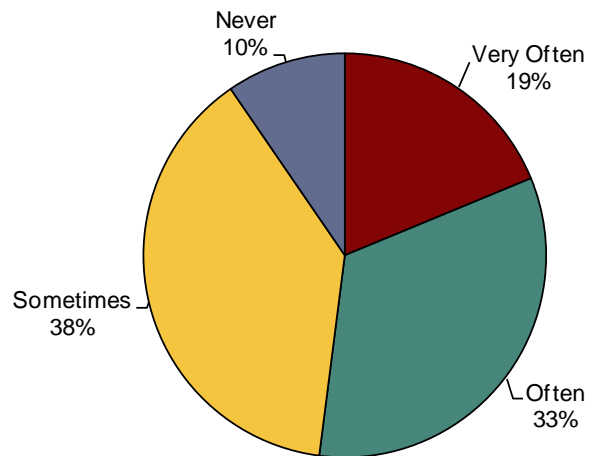
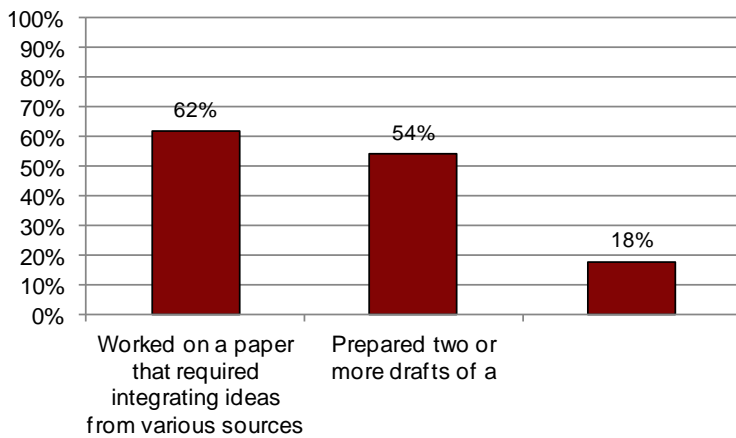
The CCSSE is a national survey instrument that was administered in-class to Foothill students and provides information on student engagement. The survey, administered to Community College students, asks specific questions that assess educational practices and student behaviors associated with higher learning, persistence and completion. Spring 2012 represented the first



- A higher percentage of students with transfer intent responded as being full-time students compared to part-time students (73% vs. 27%)
- Females represent a lower percentage of transfer students (46%) compared with the overall student population (51%).
- 26% of respondents reported being an international student, while 74% responded as being a domestic student.

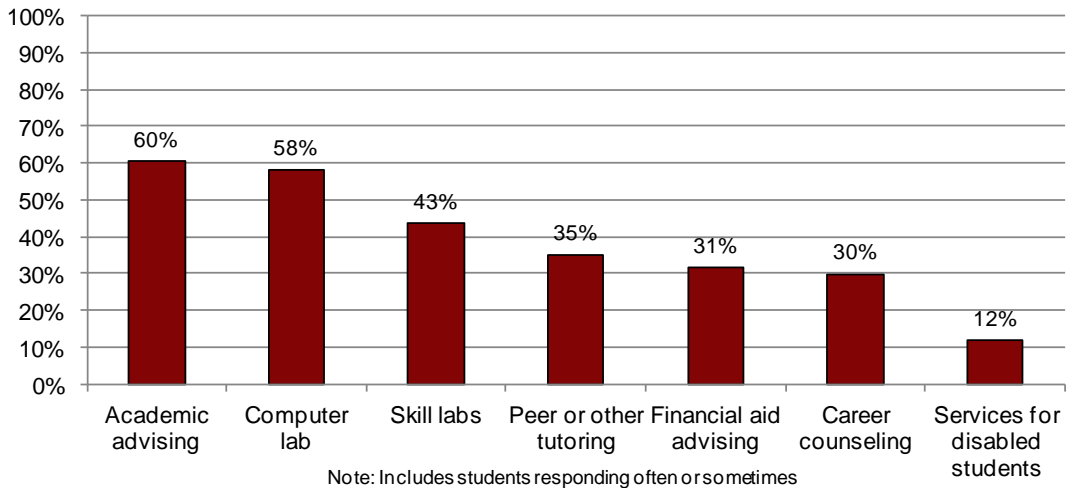
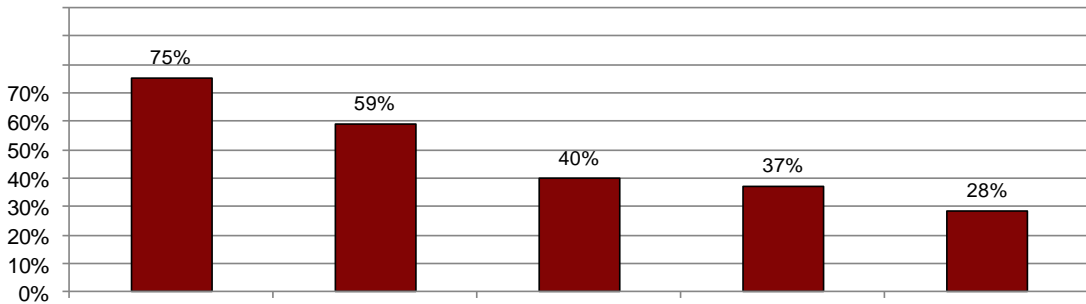


- Over half of students reported that they very often or often had communications with instructors.
- Less than one-third of respondents interacted with instructors on items other than course work.

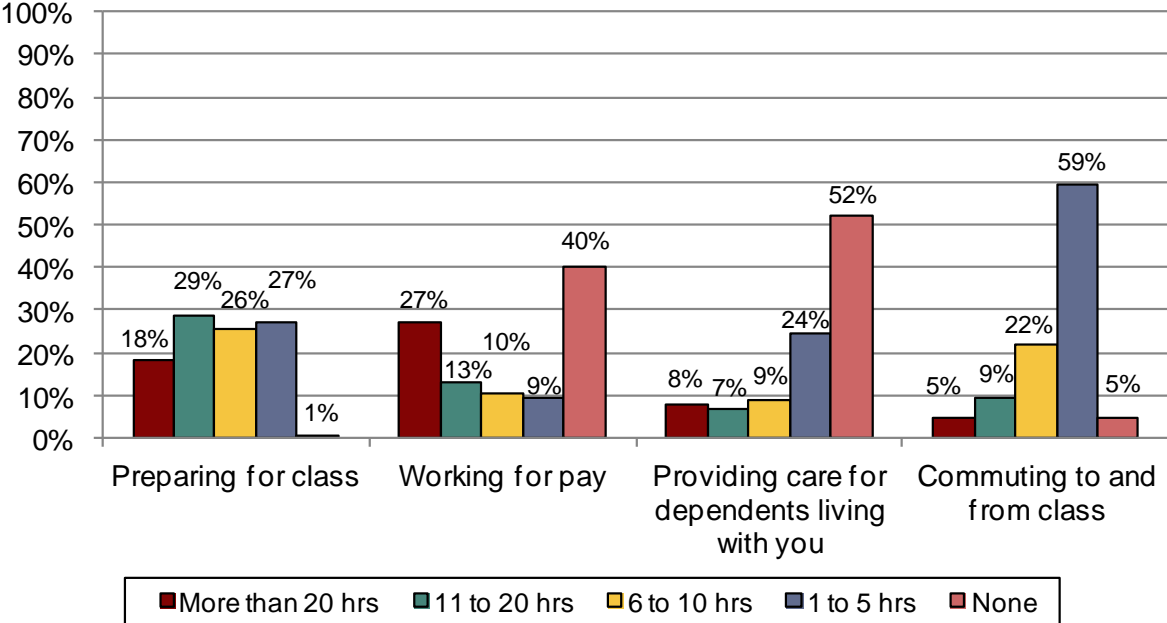


- Nearly two-thirds of the respondents very often or often worked on papers that required ideas from various sources.
- 18% of the students reported that they very often or often attended class without completing readings or assignments.
- Over half of the students reported that they often or very often worked harder than they thought they could to meet

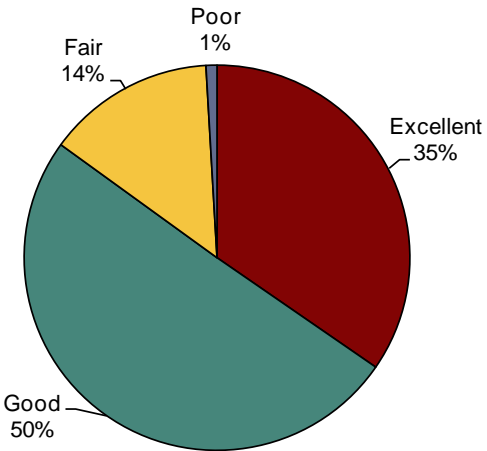




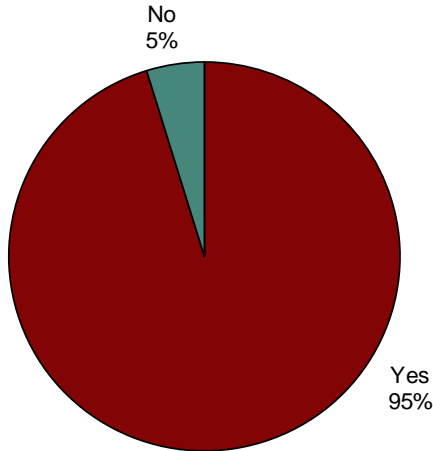




- Over one-fourth of the students reported working 20 hours or more per week for pay.
- Nearly half (47%) of the students indicated spending 11 hours or more per week preparing for class.



Just over one-third (35%) of the students report their educational experience at Foothill as excellent.



An overwhelming majority (95%) of the students would recommend Foothill to a friend or family member.

