



# A Look at Our Local Community: Conducting an (brief) External Scan

PaRC Presentation

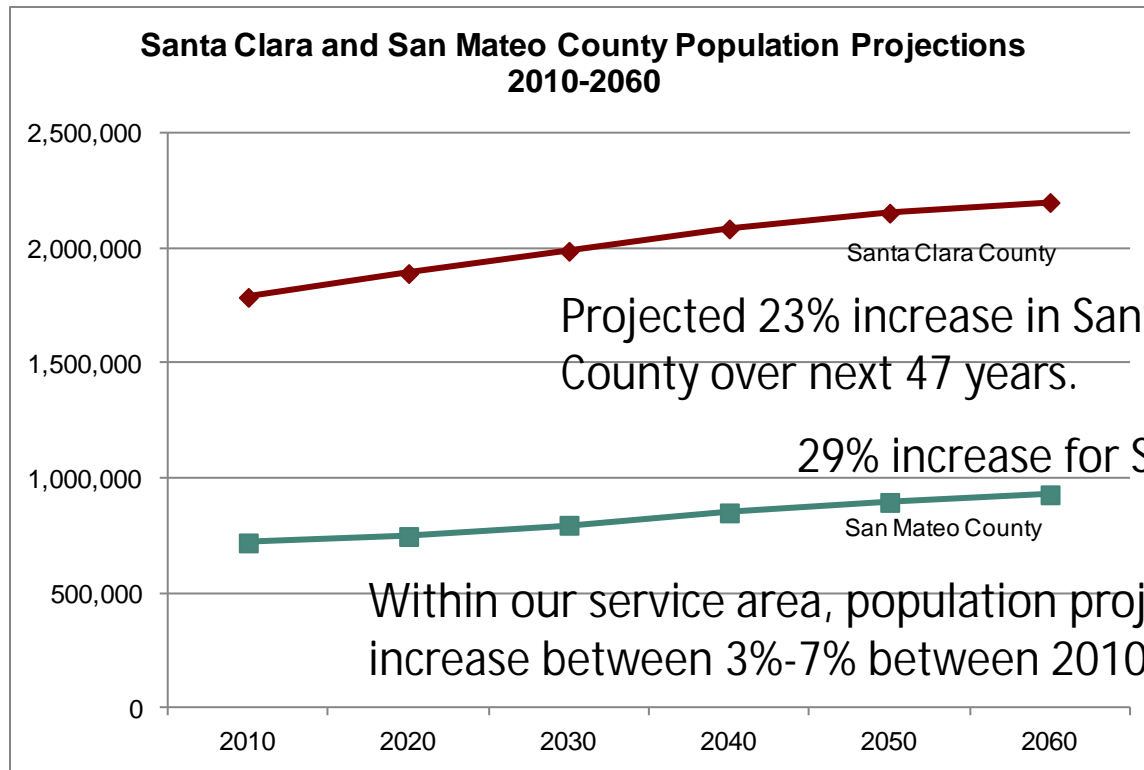
February 6, 2013

E. Kuo & T. Margesson  
Foothill IR&P

- Examination of external environment
  - Population
  - Education
  - Labor
- Consider our local community in relation to who we are and might be serving
- Inform strategic planning

# Population

Who makes up our local community?



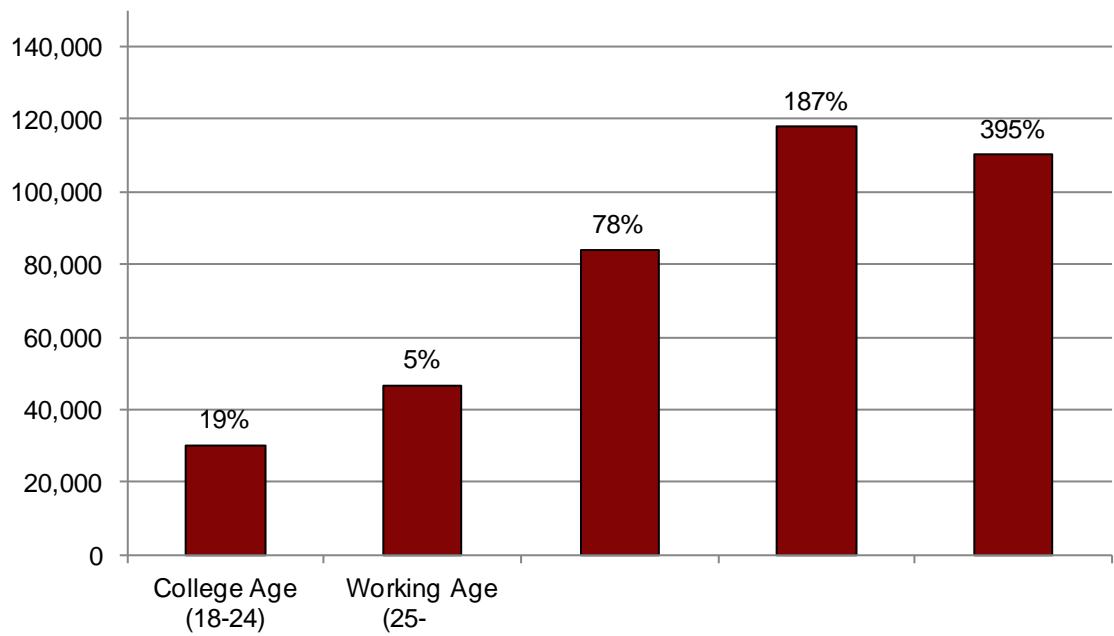
Source: CA Department of Finance, P-1 (Age)

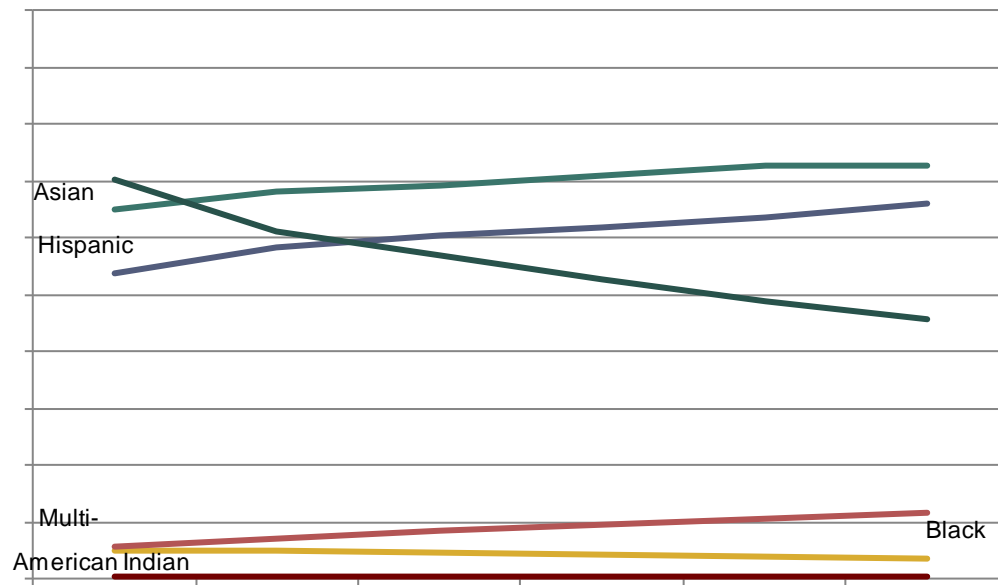
Note: Foothill service area defined as Los Altos, Los Altos Hills, Mountain View, Palo Alto, Sunnyvale.





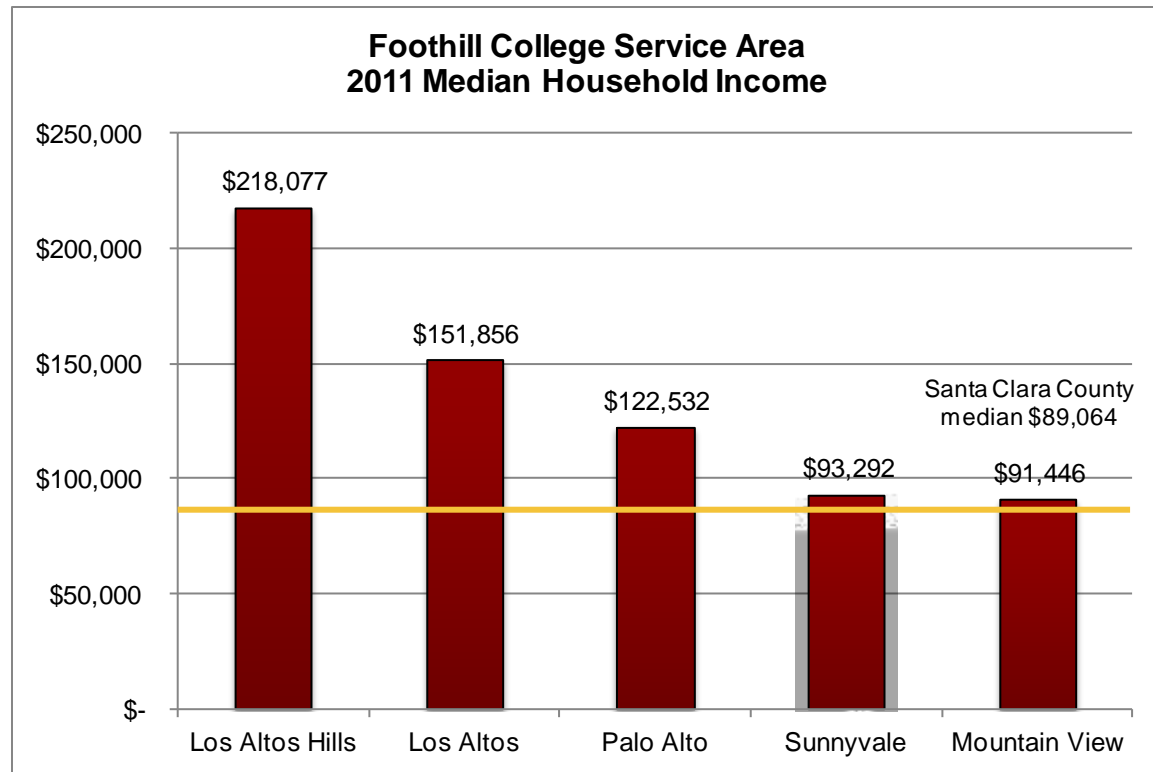
Source: CA Department of Finance, P-2 (Age)









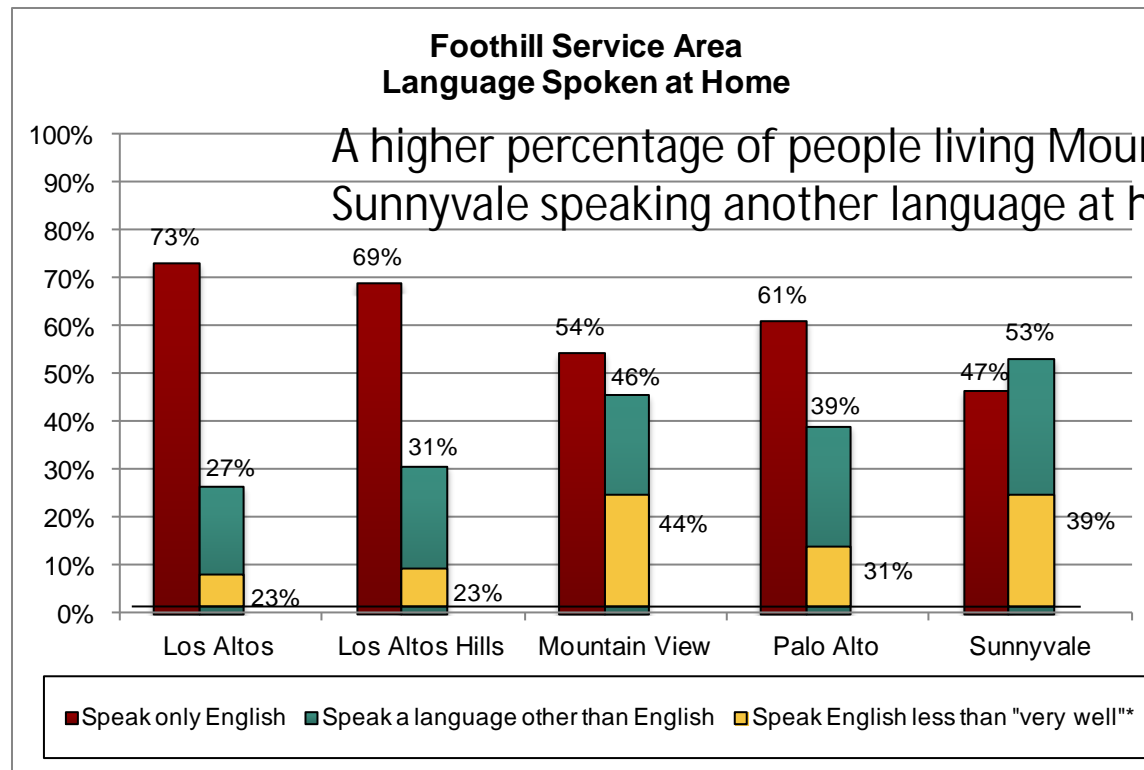


Source: US Census Fact Finder, 2011



Source: US Census Fact Finder





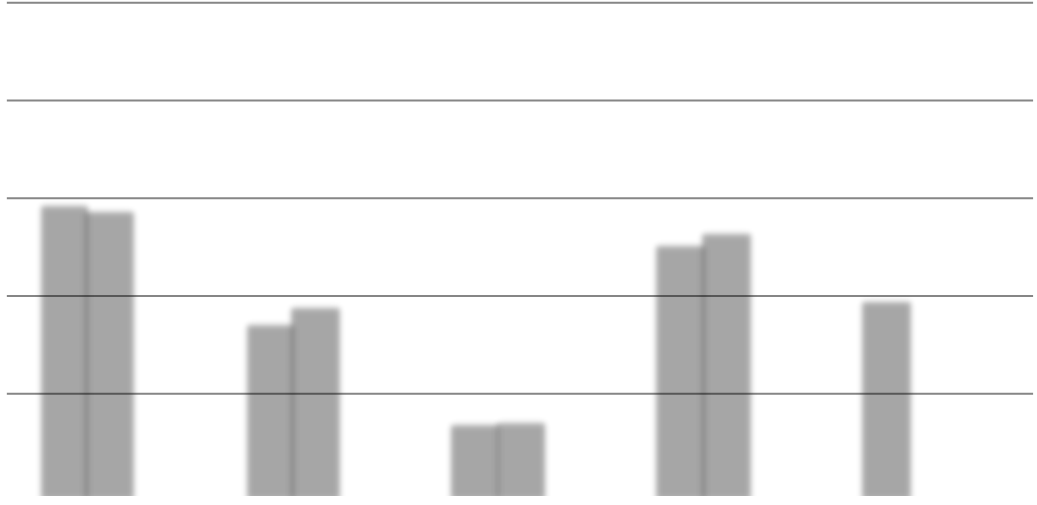
Source: US Census Fact Finder, 2011

Over one-third of people living in Mountain View and Sunnyvale who speak a language other than English at home also feel they don't speak English very well.



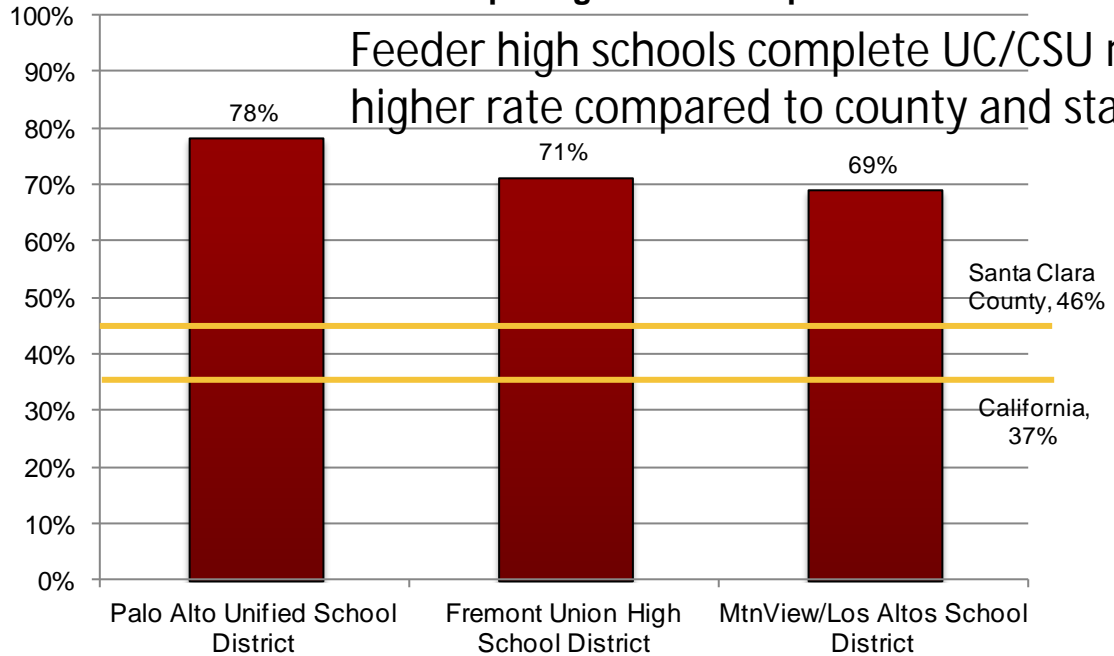
# Education

Attainment, Preparation, Attendance





**Foothill Service Area  
2010 HS Graduates Completing UC/CSU Required Courses**



Feeder high schools complete UC/CSU requirements at a higher rate compared to county and state.

Santa Clara 36%  
Sequoia HS 50%

Source: CA Department of Education



---

---

■

---

---

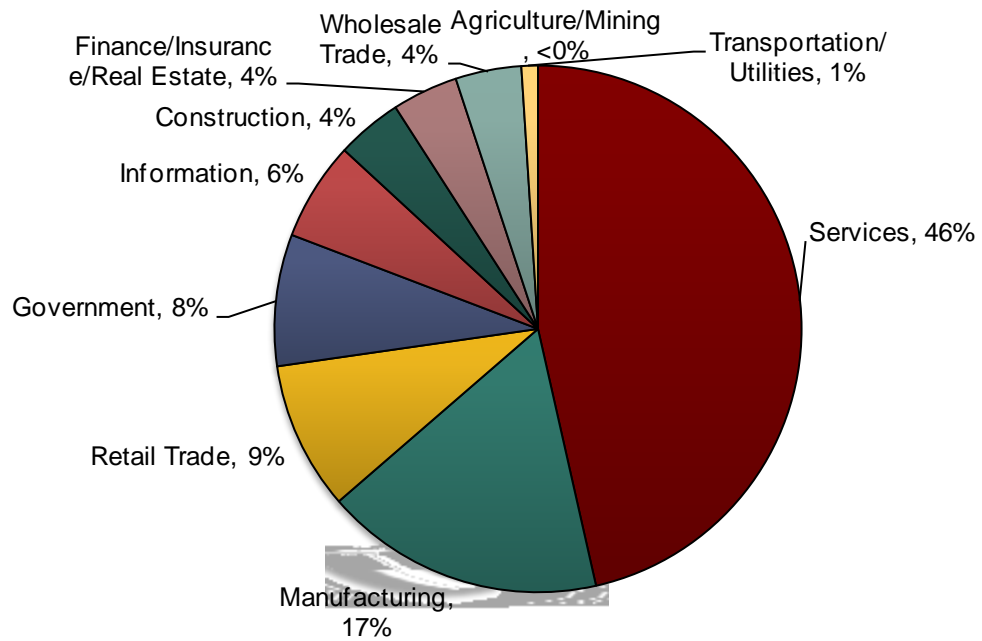
---



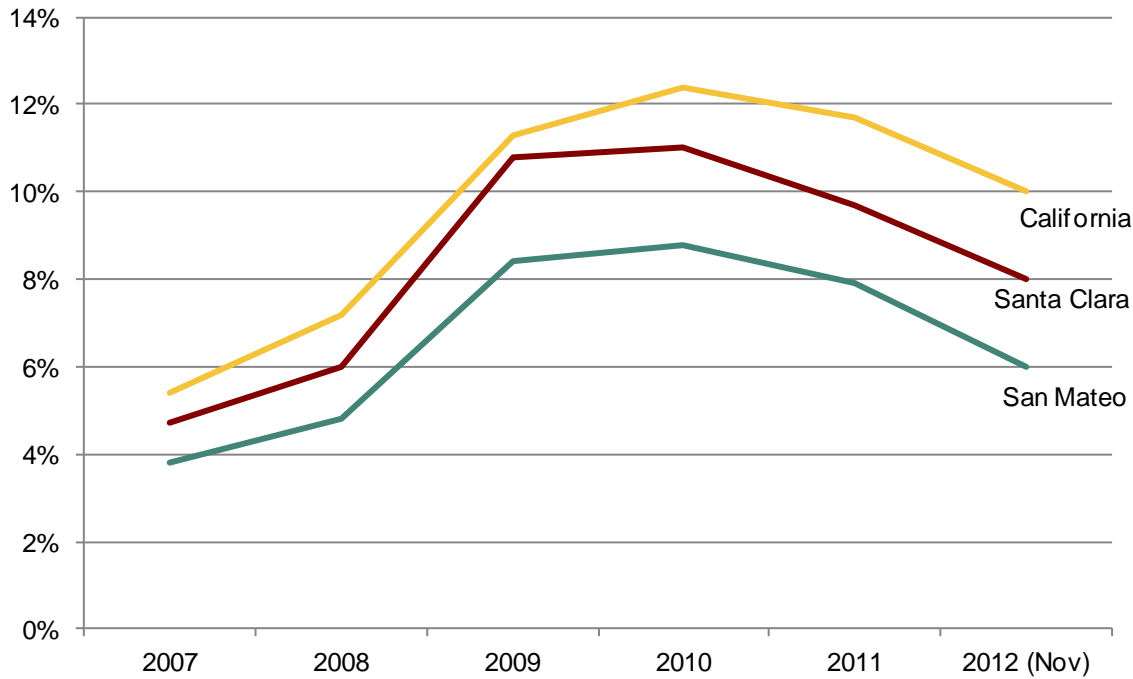
# Labor

Employers, Employment, Projections





Source: EMSI





## Fastest Growing Occupations for San Mateo County 2012-2017

Description	2012 Jobs	2017 Jobs	5 Yr. % Change	Education Level
Chemical Equipment Operators and Tenders	72	125	74%	Moderate-term on-the-job training
Credit Authorizers, Checkers, and Clerks	50	75	50%	Short-term on-the-job training
Agents and Business Managers of Artists, Performers, and Athletes	48	72	50%	Bachelor's or higher degree, plus work experience
Helpers--Carpenters	59	87	47%	Short-term on-the-job training
Tile and Marble Setters	167	242	45%	Long-term on-the-job training
Mechanical Door Repairers	66	93	41%	Moderate-term on-the-job training
Structural Metal Fabricators and Fitters	54	75	39%	Moderate-term on-the-job training
Separating, Filtering, Clarifying, Precipitating, and Still Machine Setters, Operators, and Tenders	75	104	39%	Moderate-term on-the-job training
Extruding, Forming, Pressing, and Compacting Machine Setters, Operators, and Tenders	47	65	38%	Moderate-term on-the-job training
Environmental Engineering Technicians	16	21	31%	Associate's degree

Almost all of the fastest growing occupations require training.

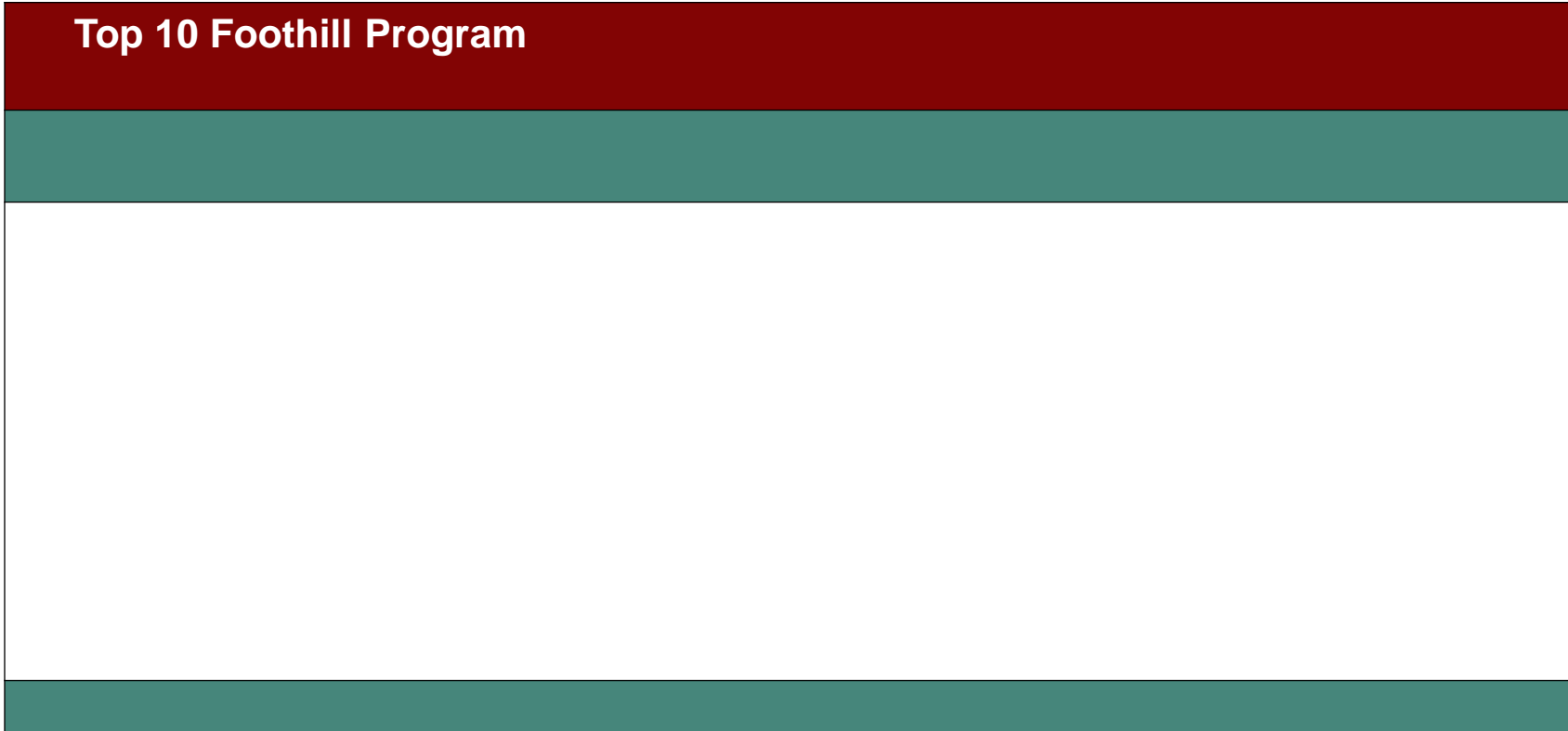
Source: EMSI







## Top 10 Foothill Program



Source: EMSI



- Population
  - Continued increase over next 45 years
  - Increase in college-age population group
- Education
  - Highly educated population
- Labor
  - Decrease in unem9(t)-14(a)01 Tw 0.9 0 Tdę BDC /T45ody A

- Use with Foothill student data
- Encourage discussion about who we are serving and who we might serve
- Serve as resource for mission revisit and for educational strategic master plan (ESMP)
  
- Questions?
- Feedback?