

Verify in the OpenCCC/CCCApply process

A

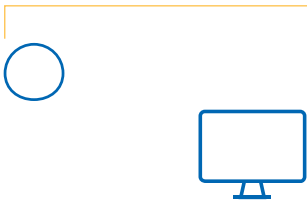
Click "Create Account," enter email and password.



S U

A

(Starts in OpenCCC/CCCApply)



R ID
You will be directed to ID.me for detailed verification.

M F A
Set up for added security.



V I (on ID.me)
C S
Ensure your face is visible.

A C Q
For additional verification.

enrollment process. OpenCCC/CCCApply process. ID.me verification. For additional verification.



G _____ **V** _____

Step-by-step help on ID.me and integration with OpenCCC/CCCApply.

ID _____ **S** _____



N _____ **S** _____

After ID.me verification, proceed to the next steps in your OpenCCC/CCCApply application.