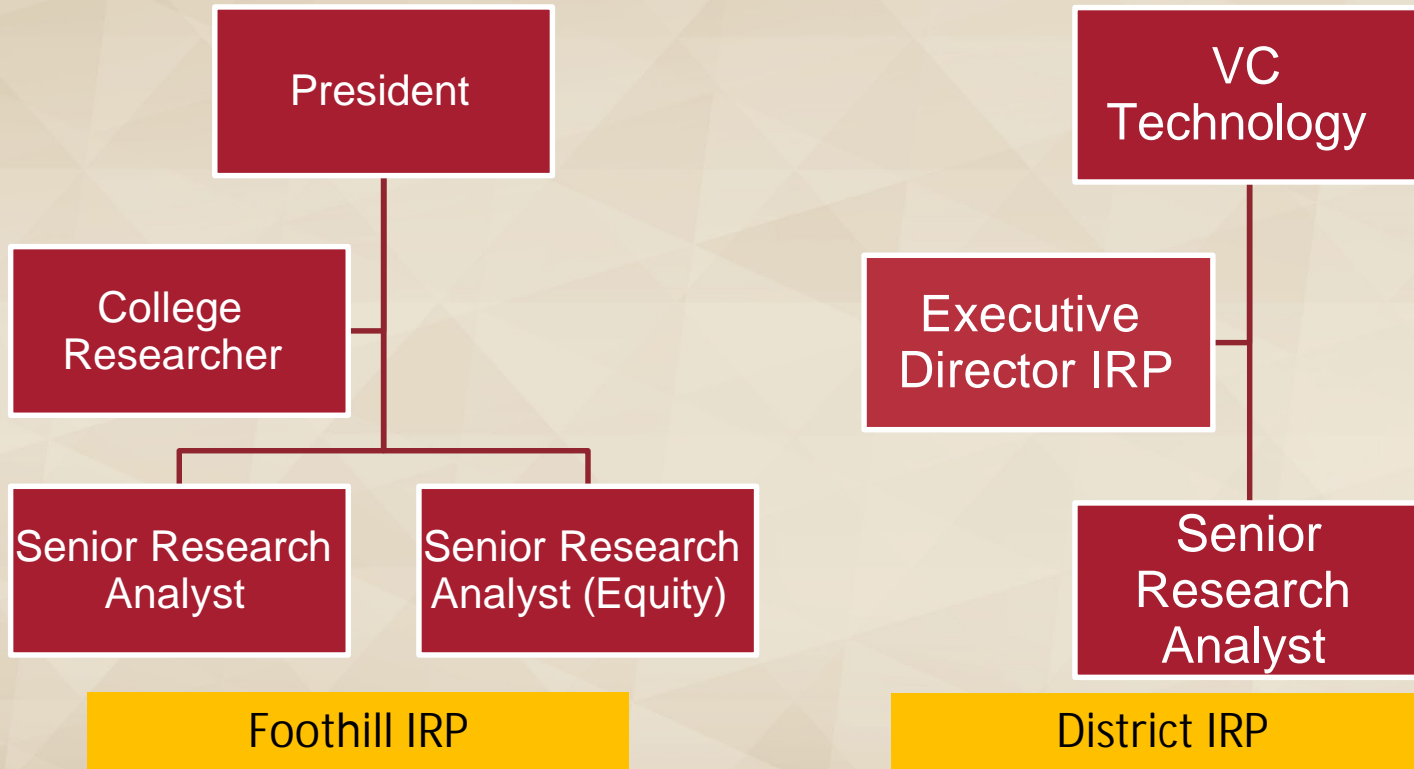


Learning Outcomes

- What is Institutional Research and Planning?
- What is data?
- What does the data show about Foothill students?
- Where do students with a workforce focus show up in the data?

We are Institutional Research & Planning



Data: What is it?

- Numbers, Text, Multimedia
- Measured, Observed
- Brought together as a collection

Data: What is it?

- Varies depending on your question
- Impact of wildfires on college enrollment
 - Images, satellite maps, student addresses
- Graduation rates among STEM students
 - Number of graduates, time to degree

Data is not....

- Information
 - How we understand the data
 - A result of data analysis and interpretation
- On its own, data does not have meaning

Data: Why do we care?

- Helps identify categories, patterns, and trends
- Informs efforts to solve/improve
- Understand behavior
- Documents our work
- Ultimately, we want to answer a question or tell a story

Why do we look at data?

- Support students toward their educational goal(s) attainment
- Create an environment that supports students for as long as they need or want to be at Foothill

Data: What do you wonder?


- What data are available?
- How do I access these data?

College Data Source: Precision Campus



College Level Data Sources

- Institutional Research & Planning website
- Student Achievement Data Sources



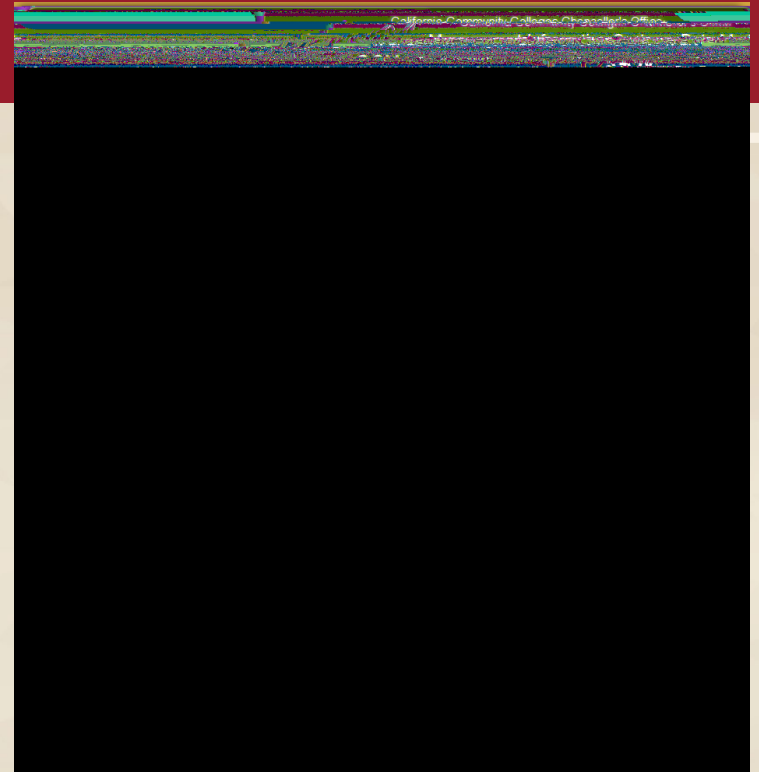
The screenshot shows the Foothill College Institutional Research & Planning website. The header features the Foothill College logo and the text "Institutional Research & Planning". Below the header, there is a navigation menu with "Home" and "Institutional Research & Planning". The main content area is titled "INSTITUTIONAL RESEARCH & PLANNING" and contains a paragraph stating: "Foothill College is committed to creating a strong, vibrant community... informed by ongoing and continuous measurement...". Below this, there is a section titled "STUDENT ACHIEVEMENT DATA" with a list of links: "Foothill College Exit Polls", "Foothill Course Success, Retention, Equity", "Foothill ACCJC Annual Reports (institutional set standards)", "Foothill Demographic & Reporting", "Student Success Metrics", "Student Success Metrics Cohort View", "Transfer & Completion", "Strong Workforce Program", "Public Policy", "CTE Quality & Survey", and "Federal Scorecard".

State Level Data Sources

- CCC Launchboard dashboards
 - Student Success Metrics
 -

State Level Data Sources

- CCCCO Data Mart
 - MIS data
 - State level data
 - District/College level data
 - Program level data



Data can set context

- Situate our location

Will the population age between 2022 to 2030?

-2%

14 to 59

-19,468

20%

60 and
older

+88,909

What occupations will experience the greatest growth between 2022 to 2030?

Top Occupations by Median Hourly Earnings with >10% Growth

- Web/Digital Interface Designers (\$102.53/hr)
- Licensed Practical/Vocational Nurses (\$37.13/hr)
- Computer User Support (\$36.98/hr)
- Dental Assistants (\$28.99/hr)
- Medical Assistants (\$27.01/hr)
- Nursing Assistants (\$22.71/hr)
- Personal Care (manicurists, hairstylists) (\$16.98/hr)

How much do students' wages change?

Median Change in
Earnings

38%

Foothill

Median Annual
Earnings

\$67,480

27%

California

\$38,552

What are the wage changes for skills builders?

Foothill

What will the public high school enrollments change between 2022 to 2030?

-20%



Is there a majority population group?

Santa Clara County

40%

Asian

25%

Latina/o/x

29%

White

Foothill

27%

29%

28%

Has enrollment changed from fall-to-fall?

2022

2023

12,840

Headcount

12,504

25,830

Enrollment

26,789

FTES increase

Has the ethnicity representation changed from fall-to-fall?

Fall 2023 Headcount

3,299

Asian

8%

3,415

Latina/o/x

4%

3,059

White

1%

Has the course offerings changed from fall-to-fall?

Fall 2023

Percent Change

7,672

In Person

26%

13,293

Online
(asynchronous)

1%

What percent of our enrollment are in online classes?

59%

Source: Precision Campus Census Dashboard, Fall 2023 [credit and non-credit] (Fall 2022: 58%) | Santa Clara County students represent 65% of in person enrollment and 51% of online asynchronous enrollment in Fall 2022 and Fall 2023.



Where do our students reside?

26%

Service Area

31%

Santa Clara
County (rest of)

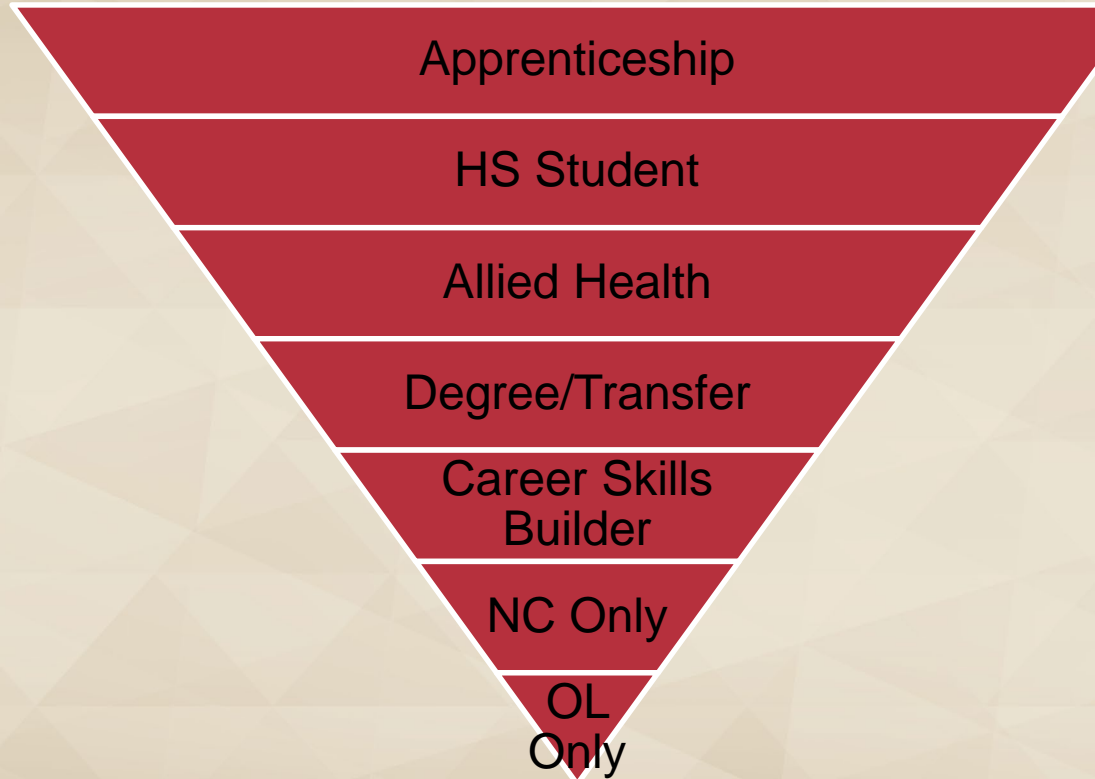
18%

San Mateo
County

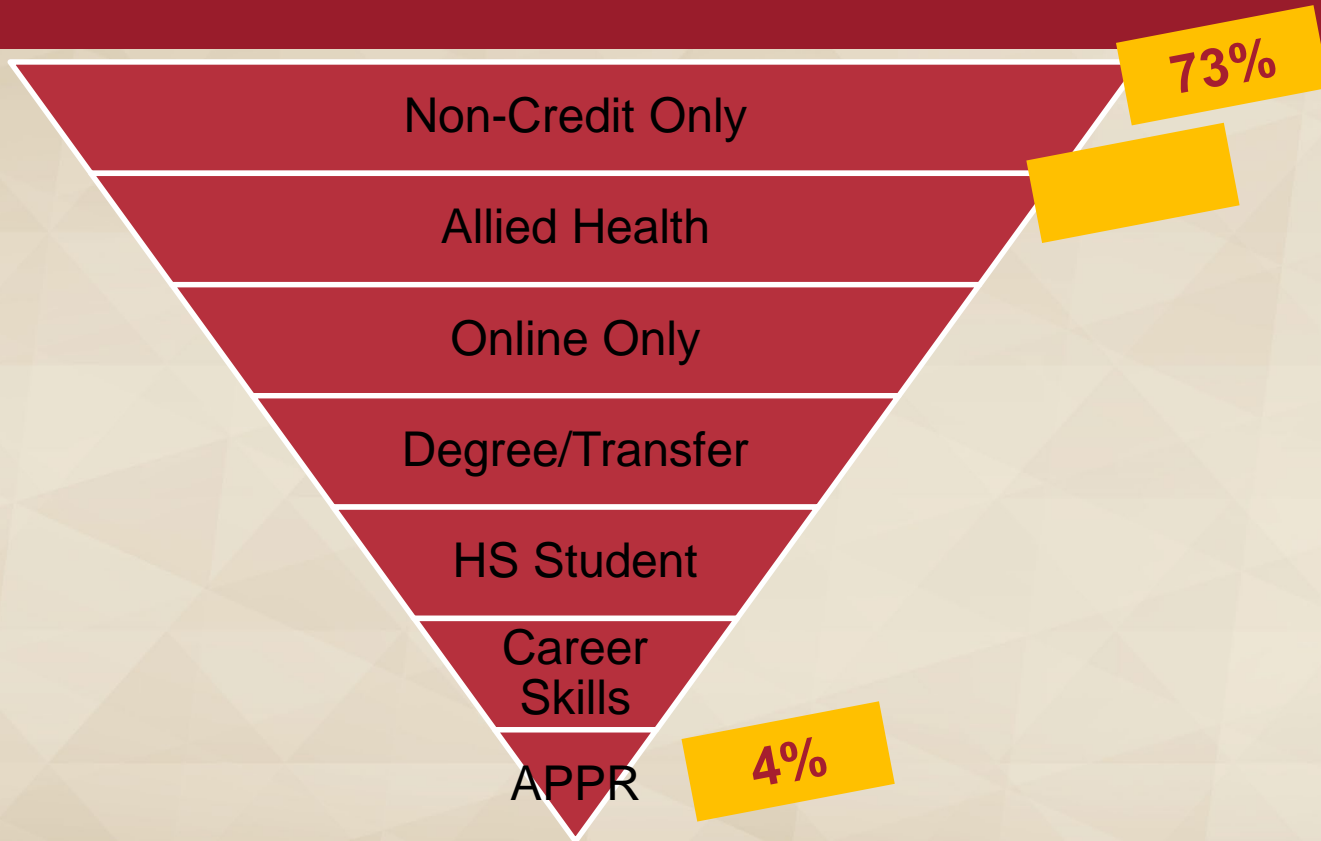
17%



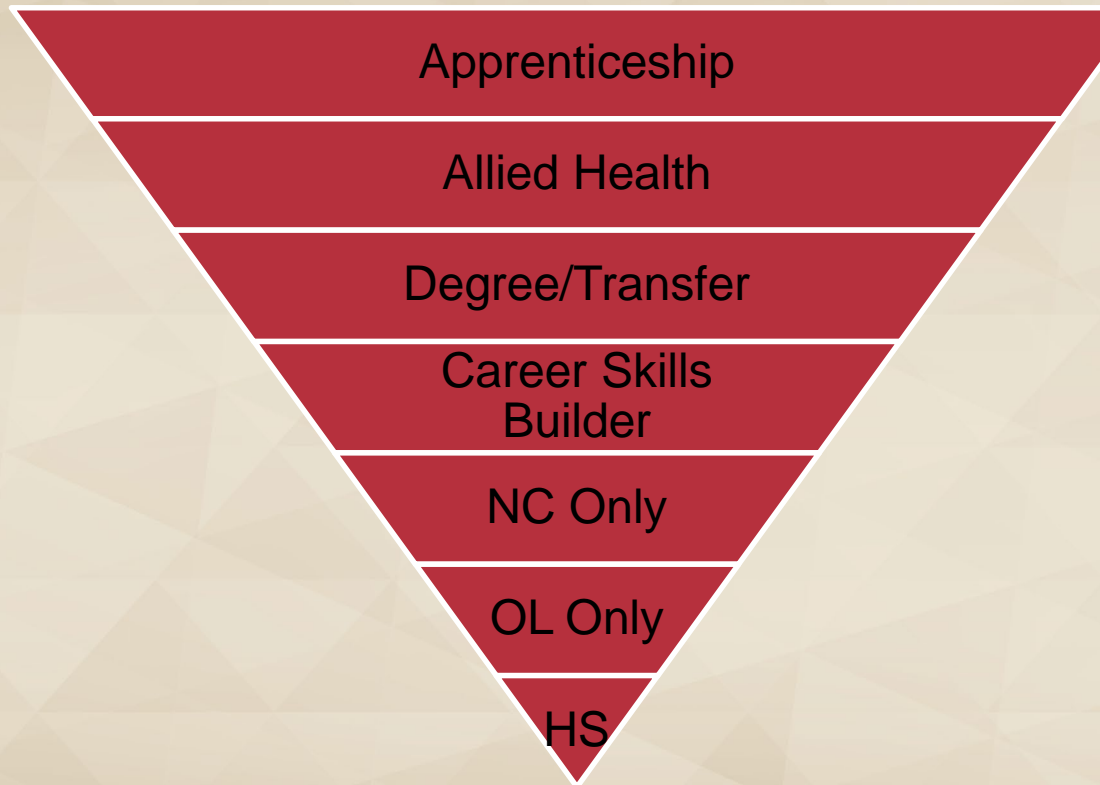
How many enrolled in fall and winter?



What percent are female?



What percent are Black, Filipinx, Latinx?



Apprenticeship

Allied Health

Degree/Transfer

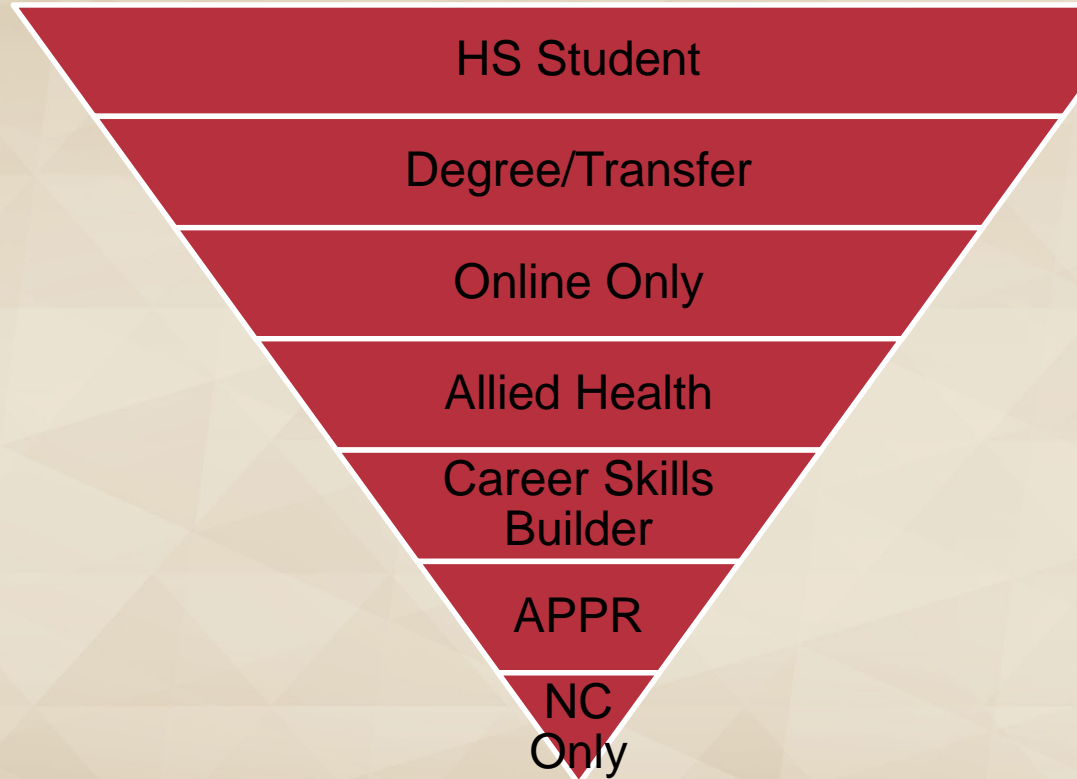
Career Skills
Builder

NC Only

OL Only

HS

How many are age 24 or younger



How many live in our service area?

HS Student

Degree/Transfer

Non-Credit Only

How many are first generation college going?

The Role of Data

- Data supports planning at levels
- Data informs, doesn't tell us what to do
 - Data confirms (or not)

