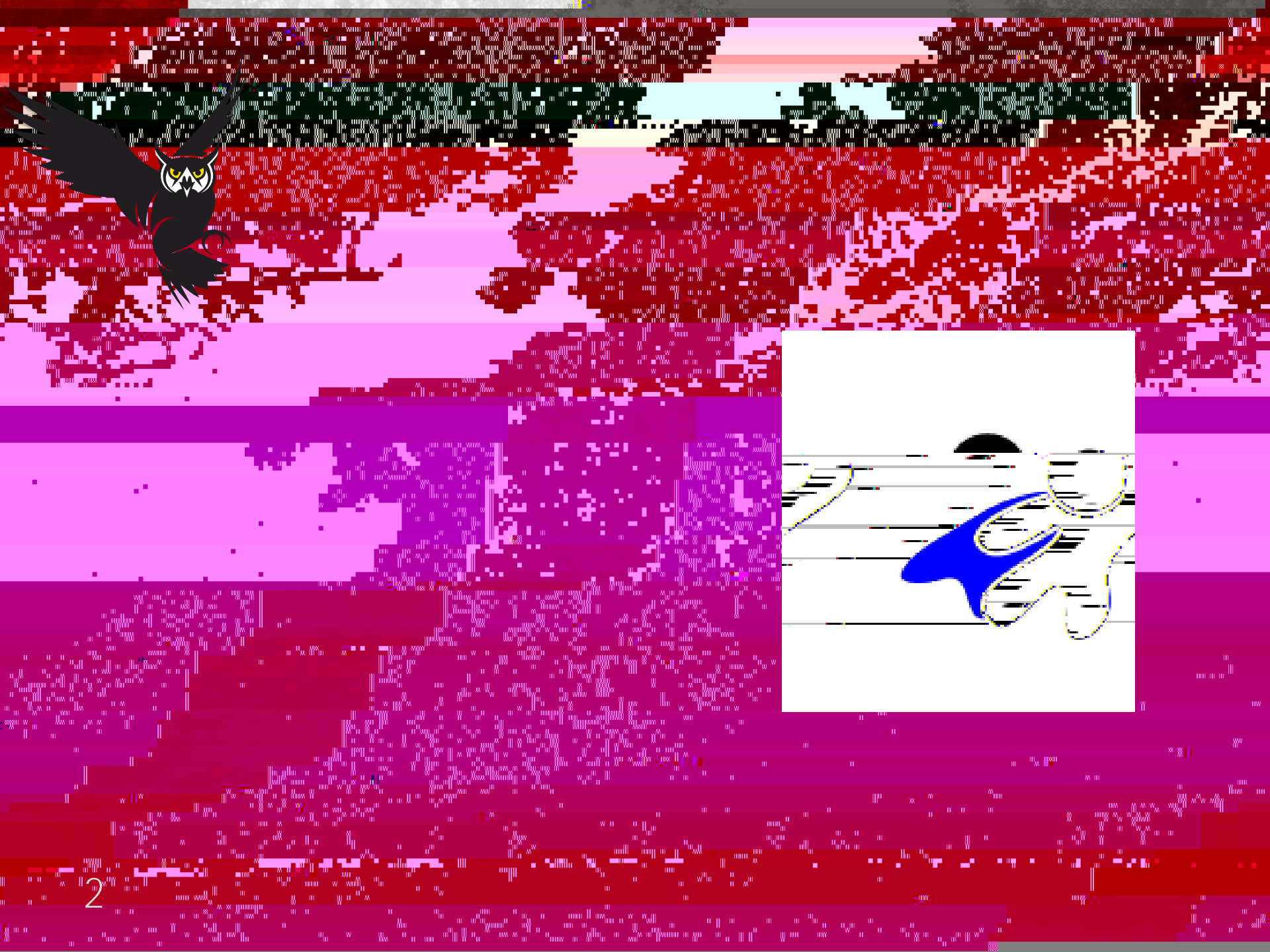
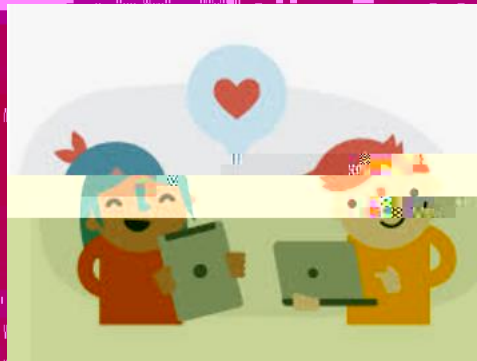




Administrative Council
April 23, 2020





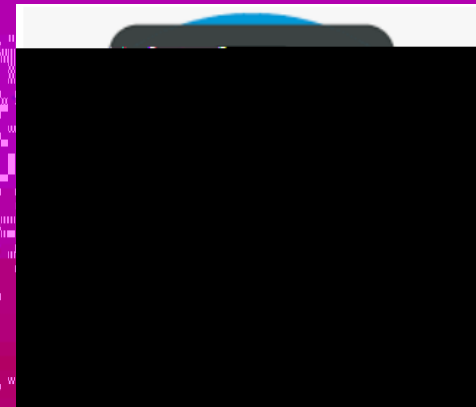


All enrolled students
Online survey
Email invite w/incentive
April 7 to April 17



1,739

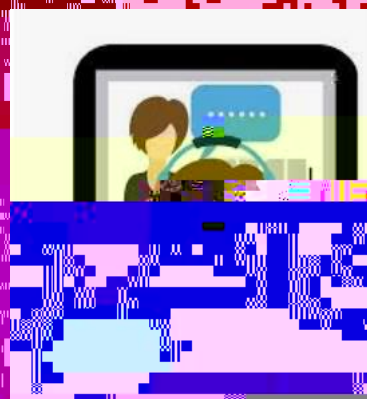
Students





71%

The story



29%

May not have Foothill online experience (but may at other colleges)



55%

Female

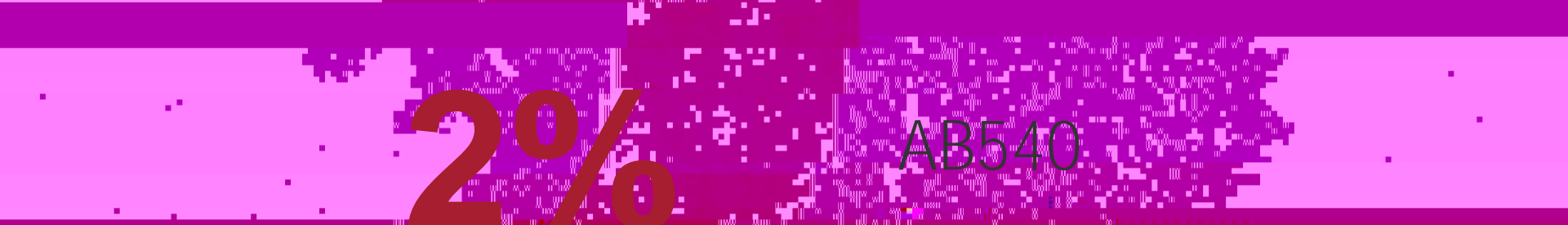
51%

Ages 20 to 39

Among students who could be matched (N=1,428)

Male 26%; No Response 19%

Age 19 or younger 21%; 20 to 24 26%; 25 to 39 25%; 40 or older 10%; No Response 18%



Among students who could be matched (N=1,428)
 CCPG/PELL: 420; AB540: 47; EOPS: 45





81%

Laptop Computer

12%

Desktop Computer

6%

Mobile Device



78%

Desktop/Laptop

Approximately

1 out of 2

Microphone, Webcam,
Internet, Smartphone

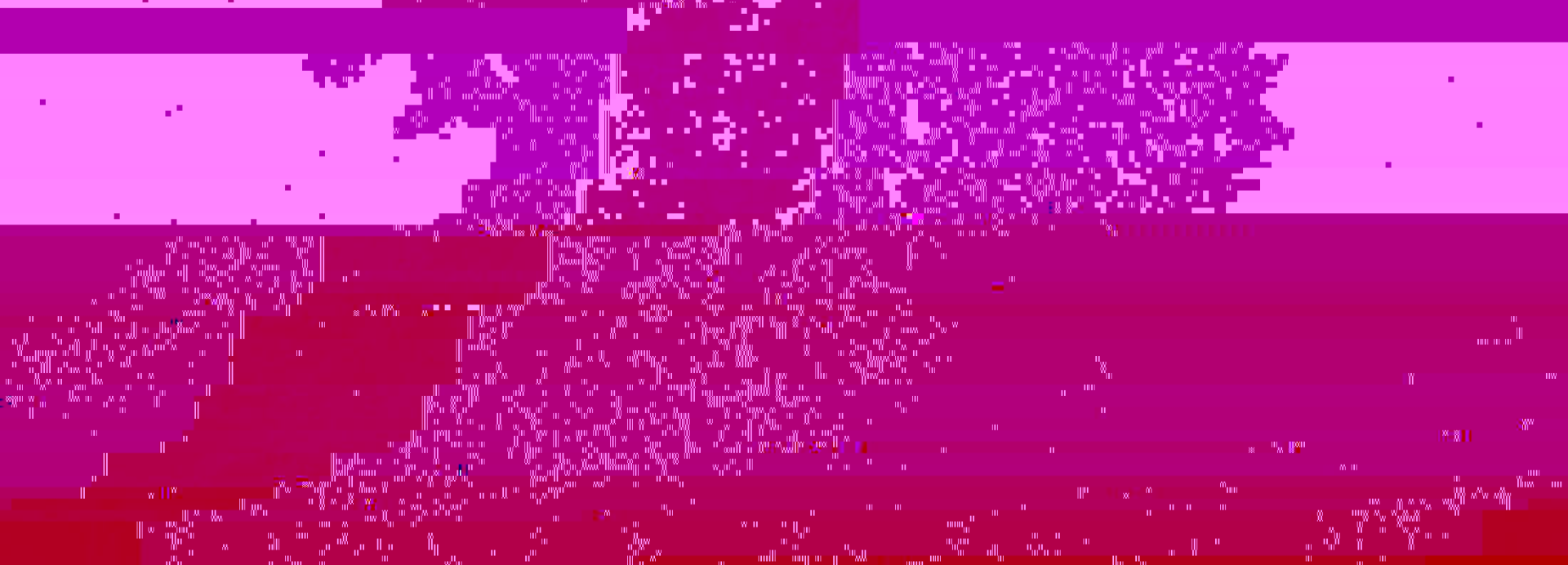
The Story:

Internet access is less consistent and reliable

Consistent defined by being able to access whenever you want;

Reliable defined by hardware will work whenever needed.

Rate reflects those who selected "Extremely Consistent and Reliable"





At least

3 out of 4

Email, Chat/IM,
Videoconference/Webinar
capabilities

The Story:

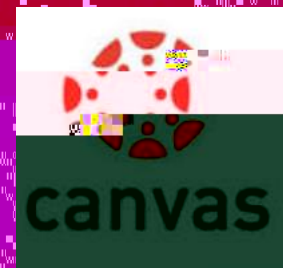
49%

Cannot easily use the latest operating system





84%



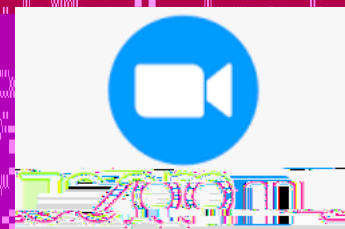
Reporting very/somewhat comfortable

The Story:

Previous experience with online learning



62%



Reporting very/somewhat comfortable

The Story:
Increasing use may benefit with
student training and support

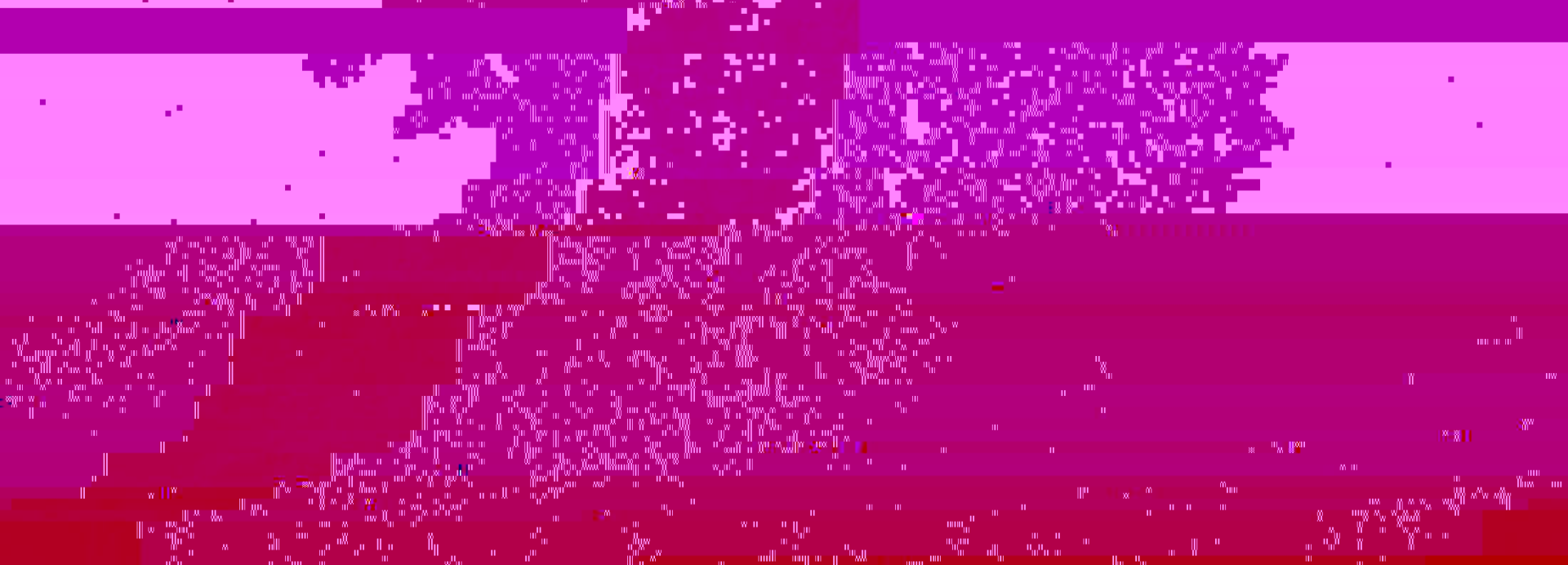


65%



Do not know what it is

The Story:
Students will need more information







1 Laptop/Internet Access Discuss Tech Issues w/Live Person How-to Videos

Other services ranked #4 Instructional software webinars; #5 Chat room to share/discuss tech issues; #6 Submit questions not related to online learning







Online is the preferred method for learning for many of our students

When in doubt...ASK



Email

Canvas Class Site

MyPortal

The Story:

Messaging should stay local



What help is needed?

Laptop access

Internet resources

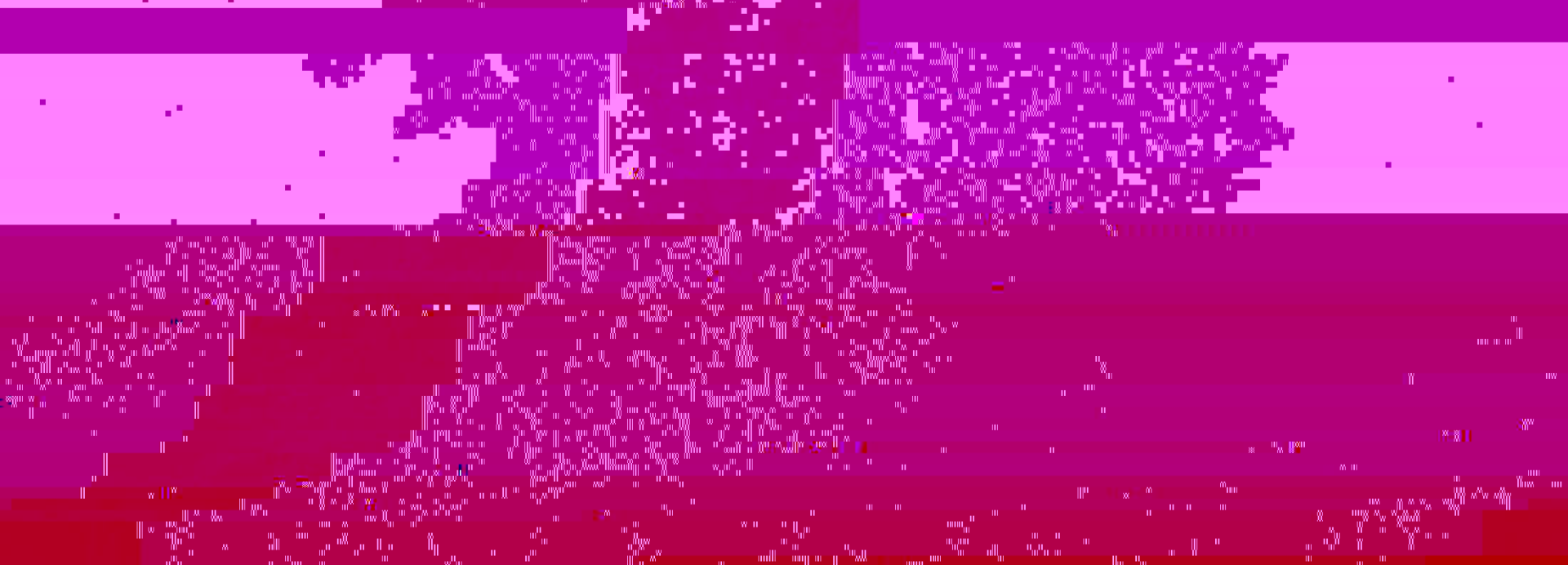
Technology support (OS support)

Where is the help needed?

Place to study

Tutoring

Finances





FOO

